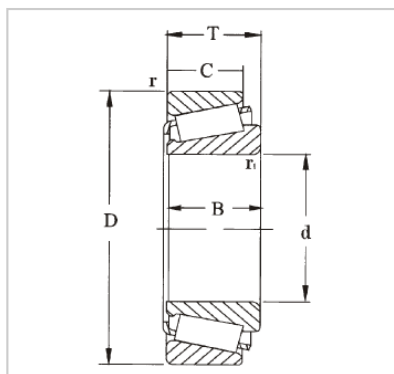


Single Row Tapered Roller Bearing

31300 Series-31315J2/QCL7C



BEARING

WUXI GUANGQIANG BEARING TRADE CO.,LTD

Designação **31315J2/QCL7C**

Dimensões principais (mm)

d1 75

D 160

B 40

Classificações básicas de carga (KN)

dyc (Cr) 240

stc (Cor) 245

Pu 29

Avaliações de velocidade (rpm)

Classificações de 3200

velocidade

Limitando a velocidade 4300

Peso (Kg) 3.50

ISO335

Dimensões (ABMA) 7GB

Dimensões [mm]

d 75

d1 116

B 37

C 26

r1,2 (min) **3**

r3,4 (min) 2.5

uma 48

Dimensões de abutment e filete [mm]

da (max) 91

db (min) 87

Da (min) 127

Da (max) 148

Db (min) 151

Ca (min) 6

Cb (min) 14

ra (max) 2.5

rb (max) **2**

Valor

e 0.83

Y 0.72

Yo 0.4

GQZ high quality 31300 Series Single Row Tapered Roller Bearing

Tapered roller bearings have tapered inner and outer raceways and rollers to handle simultaneous radial and thrust loads. Their axial load carrying capacity is directly related to the contact angle of the rollers and raceway shaft.

They are available in single-row, double-row, and four-row designs. The individual parts of tapered roller bearings are commonly sold separately as cups and cones. Cones contain the roller assembly and inner ring while cups include the outer ring. Full assembly units contain both the cup and cone. As separable bearings, different designs and sizes are available to accommodate a variety of applications.

Wuxi Guangqiang Bearing Trade Co.,Ltd-Tel:86-510-82601571-Email:gq@gqbearing.com,shary@gqbearing.com-http://www.bearing-asia.com